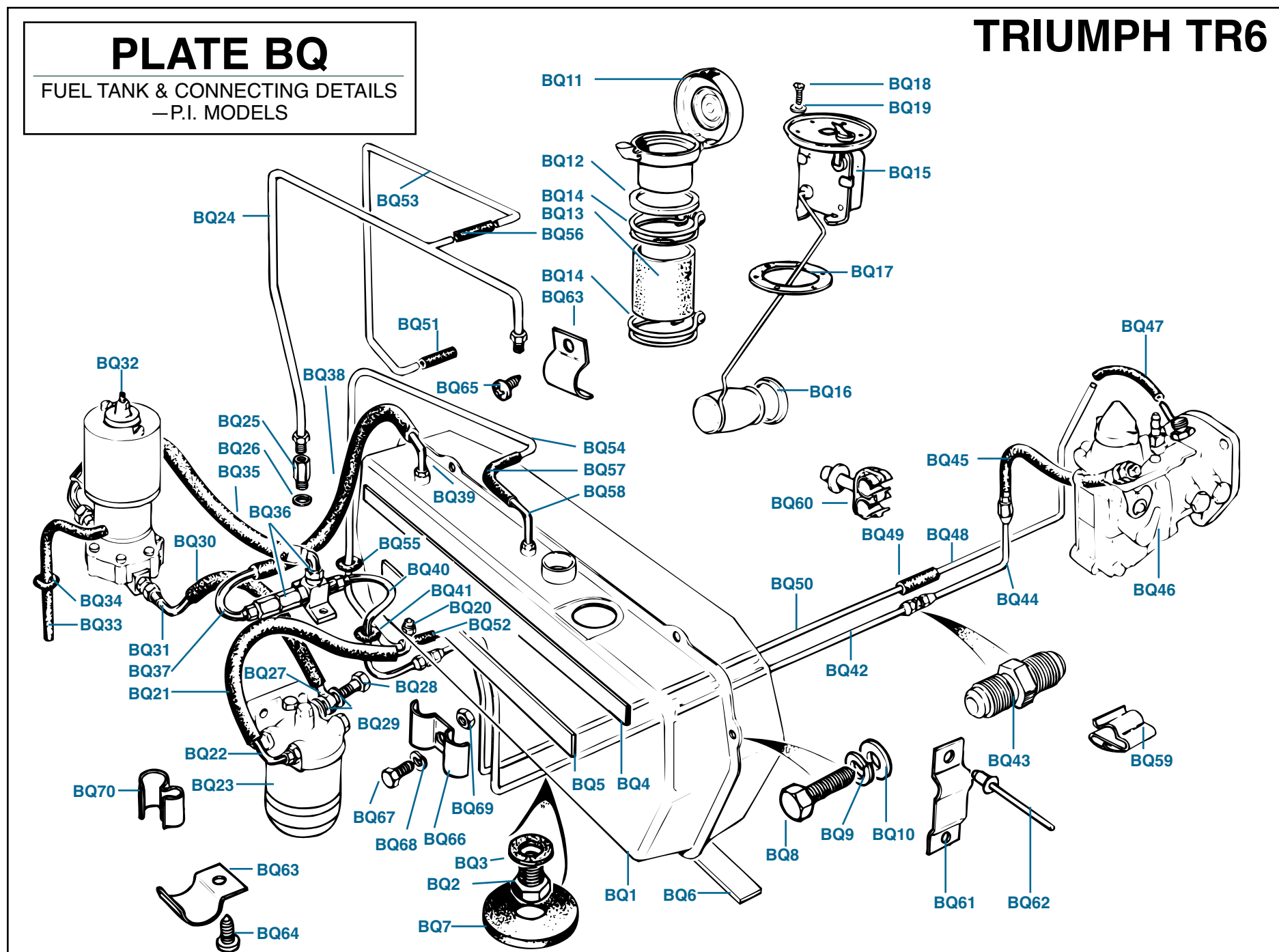


PLATE BQ

FUEL TANK & CONNECTING DETAILS
—P.I. MODELS



FUEL TANK AND CONNECTING DETAILS—P.I. MODEL

Plate No.	Part No.	Description	No. Off
		FUEL TANKS	
BQ1	308940	FUEL TANK ASSEMBLY , fitted up to comm. no. CP50000	1
BQ2	103222	Plug, drain	1
BQ3	WF513	Washer, fibre, sealing plug	1
	311282	FUEL TANK ASSEMBLY , fitted from comm. no. CP50000	1
		up to CP75000	
	103222	Plug, drain	1
	WF513	Washer, fibre, sealing plug	1
	312361	Fuel Tank Assembly , without drain plug, fitted after comm. no. CP75000, all markets except Germany	1
	312359	FUEL TANK ASSEMBLY , fitted after comm. no. CP75000, German market only	1
		Plug, drain	1
	WF513	Washer, fibre, sealing plug	1
		FUEL TANK MOUNTING DETAILS	
BQ4	611972	Felt, tank mounting, rear, top	1
BQ5	611973	Felt, tank mounting, rear, bottom	1
BQ6	617885	Felt, tank mounting, floor, fitted after comm. no. CP75000 approx.	1
BQ7	611733	Seal, drain plug and tank outlet to body floor, fitted to all markets up to comm. no. CP75000 and to German market only after CP75000	2
	611733	Seal, tank outlet to body floor, fitted after comm. no. CP75000, all markets except Germany	1
	623176	Plug, rubber, blanking redundant tank drain hole, fitted after comm. no. CP75000	1
		HARDWARE , securing fuel tank to body	
BQ8	HU707P	Screw, set	6
BQ9	WL207	Washer, lock	6
BQ10	WP120	Washer, plain	6
		FUEL FILLER CAPS	
BQ11	613506	Fuel Filler Cap Assembly , fitted up to comm. no. CP50000 approx.	1
	722612	FUEL FILLER CAP ASSEMBLY , fitted from comm. no. CP50000 approx. up to CP75000 approx.	1
	718738	Seal, rubber, in cap	1
	725117	FUEL FILLER CAP ASSEMBLY , fitted after comm. no. CP75000 approx.; quite similar to previous listing	1
	718738	Seal, rubber, in cap	1
		FUEL CAP FITTING DETAILS	
BQ12	650247	Grommet, rubber, between filler neck and mounting hole in rear deck	1
BQ13	650279	Connection, rubber, between filler neck and fuel tank	1
BQ14	CS4038	Clip, hose, securing connection to filler neck and to fuel tank	2

Plate No.	Part No.	Description	No. Off
		FUEL GAUGE TANK UNITS	
BQ15	214465	TANK SENDING UNIT	1
BQ16	139908	Washer, anti-rattle	1
BQ17	110777	Gasket, cork, between tank unit and tank	1
		HARDWARE , securing tank unit to tank	
BQ18	TR6503	Screw, set	6
BQ19	WF505	Washer, fibre	6
		FUEL PIPES AND CONNECTING DETAILS	
		FUEL LINE DETAILS , from fuel tank to fuel filter	
BQ20	151204	FUEL PIPE ASSEMBLY , from fuel tank to rubber connector, fitted up to comm. no. CP50000	1
	149556	FUEL PIPE ASSEMBLY , from fuel tank to rubber connector, fitted after comm. no. CP50000	1
	60142	Nut, tubing, connecting fuel pipe to tank	1
	TL8	Sleeve, tubing, sealing connection	1
BQ21	153141	Connector, rubber 13 1/2-inch length, fitted up to comm. no. CP50000	1
	153151	Connector, rubber, 11-inch length, fitted from comm. no. CP50000 up to CR12500	1
	159425	Connector, rubber, 11 1/4-inch length, fitted after comm. no. CR12500	1
BQ22	149556	FUEL PIPE ASSEMBLY , from rubber connector to filter head (Inlet port on rear side.)	1
	60142	Nut, tubing, connecting fuel pipe to filter head	1
	TL8	Sleeve, tubing, sealing connection	1
BQ23		FUEL FILTER DETAILS (See Section BR.)	
		VENT PIPE DETAILS , from fuel filter head to fuel tank, fitted up to comm. no. CP50000	
		VENT PIPE ASSEMBLY	1
BQ24	214895	Nut, tubing, connecting vent pipe to adaptor fitting on filter head and to fuel tank	2
	60176	Sleeve, tubing, sealing connections	2
	TL7	Adaptor, vent pipe to filter head	1
BQ25	148312	Washer, sealing adaptor to filter head	1
BQ26	150710	FUEL LINE DETAILS , from fuel filter to fuel pump	1
BQ27	151215	Banjo Fitting , connecting fuel filter to rubber connector, fitted to outlet port on front side of filter head	1
	BQ28	Bolt, securing banjo fitting to filter head	1
	BQ29	Washer, sealing banjo connection	2
	BQ30	Connector, rubber	1
	BQ31	FUEL PIPE ASSEMBLY , from rubber connector to fuel pump	1
	151878	Nut, tubing, connecting fuel pipe assembly to fuel pump inlet	1
	148813	Sleeve, tubing, sealing connection	1

(Continued on next page.)