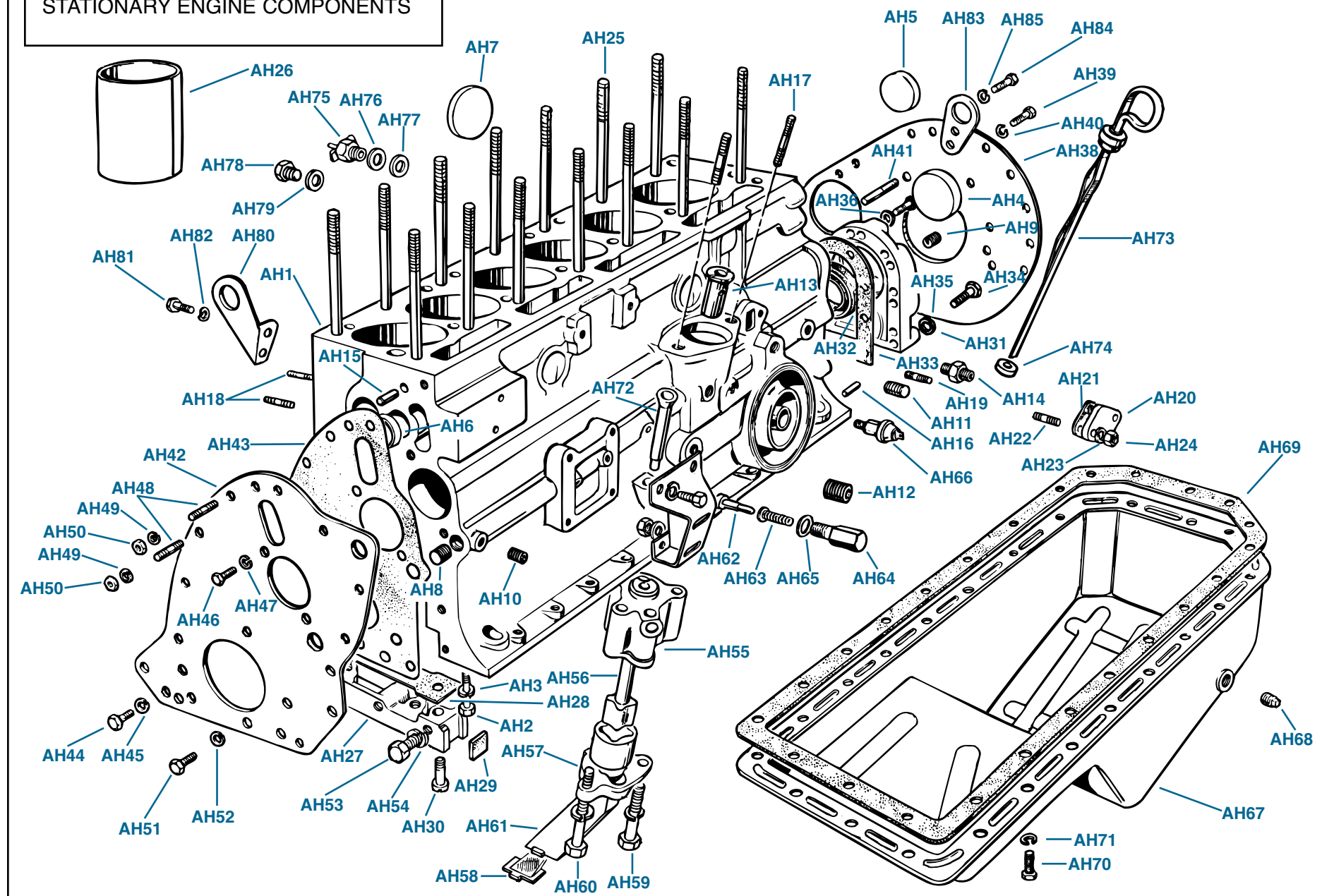


PLATE AH

STATIONARY ENGINE COMPONENTS

TRIUMPH TR6



STATIONARY ENGINE COMPONENTS

Plate No.	Part No.	Description	No. Off
AH1	517611	ENGINE BLOCK ASSEMBLY , fitted up to comm. no. CC/CP75000	1
	520880	ENGINE BLOCK ASSEMBLY , fitted from comm. no. CC/CP75000 up to CF/CR1	1
	UKC902	ENGINE BLOCK ASSEMBLY , fitted after comm. no. CF/CR1	1
		HARDWARE , securing bearing caps to engine block	
AH2	HB1024	Bolt	8
AH3	WL210	Washer , lock	8
		CORE PLUGS	
AH4	148353	Plug , core, rear of camshaft	1
AH5	144686	Plug , core, rear face and L.H. side of engine block	3
AH6	144687	Plug , core, front face of block	1
AH7	144688	Plug , core, front face and R.H. side engine block	5
		OIL GALLERY PLUGS	
AH8	PS1103	Plug , core, oil gallery, front	1
AH9	118632	Plug , dry seal, oil gallery, rear	1
AH10	118686	Plug , oil gallery	6
AH11	PU1404	Plug , oil gallery	1
AH12	116511	Plug , oil gallery	1
		MISCELLANEOUS FITTINGS	
AH13	149776	Bush , oil pump drive shaft	1
AH14	143943	Adaptor , oil pressure gauge pipe, carb models only	1
AH15	DP514	Dowel , timing cover attachment	2
AH16	DP612	Dowel , rear engine plate attachment	2
		STUDS , securing various components to engine block	
AH17	101962	Stud , securing distributor pedestal to engine block	2
AH18	128773	Stud , securing R.H. engine mounting bracket and air manifold stay to engine block, P.I. models only	2
AH19	100433	Stud , securing fuel pump to engine block, carb models, fitted earlier	2
	101962	Stud , securing fuel pump to engine block, carb models, fitted later	2
		FUEL PUMP BLANKING DETAILS , P.I. models	
AH20	147876	Plate , blanking fuel pump aperture	1
AH21	138791	Gasket , between plate and engine block	1
		HARDWARE , securing plate and gasket to engine block	
AH22	100433	Stud	2
AH23	WL208	Washer , lock	2
AH24	HN2008	Nut	2
		CYLINDER HEAD ATTACHMENT STUDS	
		CYLINDER HEAD ATTACHMENT STUDS , U.S.A., fitted up to engine no. CC66569	
AH25	146200	Stud , shorter	13
	156274	Stud , longer	1

Plate No.	Part No.	Description	No. Off
		CYLINDER HEAD ATTACHMENT STUDS—Continued	
		CYLINDER HEAD ATTACHMENT STUDS , U.S.A., fitted from engine no. CC66569 up to CC75000	
	157231	Stud , shorter	12
	156274	Stud , longer	2
		CYLINDER HEAD ATTACHMENT STUDS , U.S.A., fitted after engine no. CC75000	
	157231	Stud , shorter	12
	156274	Stud , longer	2
	146200	Stud , cylinder head attachment, non-U.S.A. markets, after engine no. CC/CP66569	14
	157231	Stud , cylinder head attachment, non-U.S.A. markets, after engine no. CC/CP66569	14
		CYLINDER LINERS , for restoring badly worn or damaged cylinder bores; see shop manual for fitting instructions before purchase	
AH26	145021	Liner , cylinder, fitted up to comm. no. CF12500/CR5000	A/R
	158942	Liner , cylinder, fitted after comm.no. CF12500/CR5000	A/R
		FRONT SEALING BLOCK DETAILS	
AH27	151134	Block , sealing, front	1
AH28	150022	Gasket , between sealing block and engine block	2
AH29	36234	Piece , filling	2
AH30	100501	Screw , securing sealing block to engine block	2
		REAR OIL SEAL DETAILS	
AH31	212622	Housing , oil seal, fitted earlier	1
	156530	Housing , oil seal, fitted later	1
AH32	143456	Seal , oil, crankshaft, rear	1
AH33	105321	Gasket , between oil seal housing and engine block	1
		HARDWARE , securing oil seal assembly to engine block	
AH34	HB809	Bolt	7
AH35	WL208	Washer , lock	6
AH36	500469	Washer , copper, fitted under head of bolt to prevent oil leakage	1
		REAR ENGINE PLATE DETAILS	
AH38	211505	Rear Engine Plate	1
		HARDWARE , securing rear engine plate to engine block	
AH39	HU807	Screw , set	7
AH40	WL208	Washer , lock	7
AH41	139836	Stud	3

(Continued on next page.)